



**Term 3, Week 3, 26 October, 2023**

★★

★ Dear Parents, Caregivers, and Whānau

★ I trust that the long weekend was enjoyed by you all and that everyone is energised  
★ as we continue through this busy last term of the year.

Now is the time when we begin planning for the year ahead, including gathering information regarding **2024 class placements**. Organising class lists is very complicated and families do not have the option of choosing either a teacher or a class simply as a preference. However, if you have some information that is important in regards to your child's class placement (e.g. not with another child that they clash with, they need extra help with Maths, your child has a certain learning need), please email me directly about this by Monday 10 November, so that the information can feed into our planning. Also, please do not assume that information sent a year ago covers this – please write a current request. Please email: [principal@riverview.school.nz](mailto:principal@riverview.school.nz)

★ Thank you to the families that supplied cakes for sale outside the hall on Election day, ★ and to the PTA for organising and running this. The PTA has been working hard to set ★ up our **"Twilight Gala"** planned for Friday 24 November. This is the biggest fundraiser ★ of the year and needs a lot of support so, if you can help, please sign up on the ★ board in Reception. An early piece of advice: A token system will be used this year, ★ and you can buy these the week before from Reception, which makes for a quick ★ entry at the start of the event. Alternatively, please **bring cash** to trade for tokens, ★ which is much faster than lining up for an EFTPOS machine which, while available, will ★ be slower.

★ The Board of Trustees met on Tuesday evening and went through the community  
★ feedback received on the draft Strategic Plan. The Board is very appreciative of the  
★ 61 responses and comments, which were generally very thoughtful and  
★ constructive. We also acknowledge that it would have been helpful to add English  
★ translation beside some of the kupu Māori (words). There was strong support (95%) for  
★ each of the first two goals, and general support (68%) for the third goal. These goals  
★ are actually required by the Ministry of Education to be in our new strategic plan (as  
★ in all state schools), but the way in which we go about achieving them is where we  
★ have local autonomy and can shape things to best suit our community. We are  
★ looking to make some small adjustments following your feedback. Again, thank you  
★ to all who contributed.

P.T.O.

P.T.O.

[illegible]

★ The **Sport Northland “Bike Ready”** programme for Years 5 and 6 students last week  
★ was a real success. Those running it told me that our students were the best  
★ mannered that they could remember and were a credit to our school. Great  
★ feedback indeed!

★ The **shortcut from Kendall Road** up to the back of the field is now open. We have to  
★ keep the gate shut during and after school, (it is there for safety reasons), but it is easy  
★ to open and close at the start and end of the school day. ★

★ On Tuesday 31 October (Halloween), the PTA will be running a sausage sizzle by the  
★ road side, and offering some carparks (for a small fee) for families walking the streets  
★ doing 'trick or treat'. ★

★ On Tuesday 31 October (Halloween), the PTA will be running a sausage sizzle by the  
★ road side, and offering some carpark (for a small fee) for families walking the streets  
★ doing 'trick or treat'. ★

★★★★★  
K. M. G. J.

[illegible]

Email [riverviewschoolpta@gmail.com](mailto:riverviewschoolpta@gmail.com) or txt/call Bonita on 0276801627 for more information.

**We need YOU!**

Loud Shirt Day is the annual appeal of The Hearing House and the Southern Cochlear Implant Programme, two charities dedicated to enabling deaf children and adults with cochlear implants or hearing aids to listen and speak like their hearing peers.

### PB4L HEARTWISE Mural

At 2:00pm today, the school will be unveiling the mural that Heather Heihei and her team (Georgia Kitchingman, Isaac Flaherty, Charly Mikkelsen, Covan Bowd, Daisy Connolly, Tino Nyakudya, Hannah Shepherd, Eli Clark, Rome Kriz, Isabella Loggia, Winter Oszejca, Axel Lazet, Alex Mason) have worked so hard on over the past few months.

The mural is the collaborative result of student voice, design, and work, led by Heather. It combines our HEARTWISE Values and the Ngāti Rēhia pūrākau/stories and local places of significance into one absolutely stunning piece of art that tells our story as a school. We have named it Ā Mātou Kōrero | Our Story.

The mural is on the end of Room 5, in the Shade Area. We invite you to pop in and have a look at it some time. You will be impressed! We are entering it into the Resene School Mural Competition (our other mural, Summertime in Northland, won the Resene Best School Mural Award in 2012).

**Thank you to all the wonderful parents and guardians that booked their tamariki into the Spring school holiday programme. We had several new families join our wonderful programme.**

**In order to help you plan ahead for the summer holidays, here are the opening dates for the OSCAR programme for the summer holidays: 15 - 22 DECEMBER 2023 and 15 - 26 JANUARY 2024**



**The Programme Manager will release the Summer Holiday Programme with all the trip details, activities and fun, fun, fun, once the details are all finalised.**

### CELLPHONES

We do not permit cellphones at school. Please ensure that your children leave these at home. We cannot accept any responsibility for their loss. If you are in doubt, please contact the school for clarification.

If there is a need for a cellphone to come to school, it must be left at the school office until the end of the day. Cellphones must not go on school trips or camps.



**Term 4** is a very busy term. The following is a list of events planned that you may wish to refer to or put in your diaries:

- Oct. 27 (Friday) Loud Shirt Day – Student Council fundraiser for hearing-impaired children
- Oct. 31 (Tuesday) Halloween – PTA fundraiser outside hall
- Nov. 6-10 (Mon-Fri) Scholastic Book Fair in Library
- Nov. 13 (Monday) Teacher Only Day - **no school**
- Nov. 24 (Friday) Final day for Bible in Schools  
PTA Twilight Gala 5pm – 7pm
- Nov. 29 (Wed.) Board of Trustees final meeting for 2024
- Dec. 1 (Friday) Years 1 – 3 HEARTWISE Assembly
- Dec. 4 (Monday) Year 6 Sail Day #1
- Dec. 5 (Tuesday) Year 6 Sail Day #2
- Christmas Carols at school 5:30pm
- Dec. 6 (Wed.) Years 1 and 2 Variety Show at 1:30pm
- Dec. 7 (Thursday) Years 4 and 5 HEARTWISE Assembly
- Dec. 9 (Saturday) "Christmas in the Domain"
- Dec. 13 (Wed.) Year 6 Celebration Assembly (Year 6 families only) at 1.00pm
- Dec. 15 (Friday) Last school day of 2023. School finishes at 12noon.



Our Kerikeri "Christmas in the Domain" this year is on Saturday 9 December between 5:00pm and 8:00pm. The theme is 'Under The Sea'.

Students, who are interested in being part of the Riverview School walking parade, can dress up as a sea creature and be a part of the parade. Ms Phillips and Ms Fletcher will lead the students in the parade, so look out for them when you arrive at the domain.

We will meet at the Kerikeri Domain at 4:30 pm, ready to start walking at 5:00 pm.

Parents will need to provide a costume for their child (there will be prizes provided by the organisers).

Parents will need to supervise their children, both during the parade after the parade.

Parents are most welcome to dress up and join us in the parade.

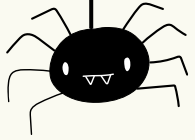
The "Christmas in the Domain" event lasts until 8:00 p.m, with food and family activities available.



RIVERVIEW SCHOOL



SPOOKY NOTES



TUESDAY 31 OCTOBER

*The Riverview School staff carpark will be open for car parking at a cost of \$5 per car.  
The gate will be monitored from 4.30pm.*

*The Riverview School PTA will be cooking up a storm with sausages on the BBQ \$2 each.*

*Bring cash and support the Riverview School PTA*







**JOIN US FOR THE  
RIVERVIEW SCHOOL**

# **TWILIGHT GALA**

**FRIDAY 24 NOVEMBER 2023 5PM-7PM**

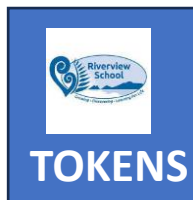
**AT RIVERVIEW SCHOOL**

**FUN FOR THE WHOLE FAMILY!**

**BRING YOUR WHĀNAU AND FRIENDS AND BE  
SOCIAL AT THIS WONDERFUL FUNDRAISER  
HOSTED BY THE RIVERVIEW PTA!**

**KIDS GAMES | FACE PAINTING | BOUNCY CASTLES |  
COAST TO COAST CAT RESCUE CUDDLE A KITTEN  
FOOD STALLS | BAKING STALL | SILENT AUCTION | MARKET  
STALLS | PLANT STALL | THE KERIKERI GELATO COMPANY |  
BAY BLISS COFFEE CARAVAN |  
MUSIC AND MORE!**

**TOKENS ACCEPTED BY RIVERVIEW SCHOOL STALLS,  
CASH ONLY FOR INDEPENDENT MARKET STALLS.  
TOKENS AVAILABLE FOR PURCHASE VIA CASH AT THE GALA**



# IMPORTANT NOTICE



## TWILIGHT GALA



This year the Twilight Gala will be running a new token-based payment system; we wanted to give everyone as much notice as possible prior to the event. In the new system, you can buy tokens with cash, both at the start and during the event, to pay for food and activities.

When you arrive at the event, there will be numerous points available to buy tokens. Please bring cash with you, then head to one of the token exchanges on arrival to purchase them.

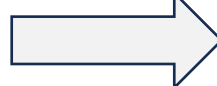
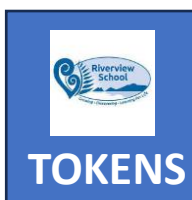
Some independent market stalls will still accept cash, but food, games, bouncy castles, and other activities will all be paid for using tokens.

Each token will be valued at \$2 and available to buy individually or in bundles of 10 for \$20.

To make the whole process as seamless as possible, we will be ensuring that there are multiple token stations to allow everyone to exchange cash for tokens. **Please bring cash to make everything as fast and seamless as possible for everyone.**

We are looking at advance sales of tokens from the school office in the week leading up to the Gala; more details will follow.

Please note that tokens will be non-refundable.





# Kerikeri Cricket Club

## Junior Cricket 2023-24

- ✍ Friday night cricket starts October the 27th
- ✍ Ages: Years 1-6
- ✍ When : Fridays 4-5pm
- ✍ Where: Kerikeri High School

No experience or equipment necessary ! Our hubs are based off the NZC Smash Play junior tamariki programme which focuses on game play, values and enjoyment with lots of hits, catches, action and fun!

To register follow the link below. We play 7 weeks before Christmas and 7 weeks after. Please select Terms 4&1 (ignore the fact it says Monday; this is an administrative error that the club can't change). <https://www.playhq.com/new-zealand-cricket/register/cea7d8>

Questions? Call/Text Becs 021 813528 or follow the Kerikeri Cricket Club Facebook Page

