



Wishing each member of the Riverview School community a successful and rewarding 2024! Together, let's make it a year to remember.

Back to School Evening

We invite all parents and caregivers to our "Back to School" evening on Thursday 8 February. This begins with a gathering in the hall at 6:30pm to learn what is planned for the year ahead, and to be introduced to the staff. You can then meet with your child's teacher (some teams may choose to meet in teams rather than as individuals, depending on numbers) and learn there about how things operate in your child's classroom. The PTA will then be offering refreshments in the hall. Unfortunately, we can not accommodate children at this event.

'How Far will Bo (and Lola) Go?'

It is that time of year again and I, for one, am very excited about this year's 24-hour fun run 'How Far Will Bo Go?'. We have set Friday 1 March as the big day, with the run starting at 10:00am and finishing at 10:00am on Saturday 2nd. Next week, the Years 5 and 6 students will receive the information and permission forms for 'How Far Will Bo Go?'. This is also a reminder that our Year 4s will participate in the 'How Far Will Lola Go?' run during the day on Friday 1 March.

Cell phones and Smart watches: The school policy is that cell phones are not needed at school for any educational purposes and should be left at home please. Should there be a genuine need for a child to bring one, they must bring it to the office before school starts and pick it up at the end of classes. The same requirement applies to any "smart watches" that have phone or recording capability. The development of this technology is very impressive but, should such expensive devices come to school, they may be used inappropriately or may be damaged, lost, or stolen; we strongly recommend that anything that expensive should not be at school.

Parent Teacher Association:

We have a group of dedicated parents and caregivers that meets each month to discuss, plan, and organise a range of activities to fundraise for, and support, our kura. If you are interested in being a part of this, the next meeting will be held this month, a date is yet to be confirmed.

Attendance:

Attendance is important for more than just learning. Reduced attendance has been shown to increase:

- schoolwork-related anxiety,
- social and emotional concerns (such as friendships) and can decrease a child's sense of belonging and wellbeing.

At Riverview School, we aim to build self-confidence in each child, and to support them in meeting their learning, social, and emotional needs, enabling them to be the best that they can be. Regular attendance supports us in building and maintaining positive outcomes for learners.

Arrival Times:

We ask that children are not dropped off at school before 8:00am. This is a health and safety matter; at that time, staff are busy preparing for the day, and are not be able to supervise your child/ren.

P.T.O.



Riverview School works with SchoolDocs to maintain, update, and review our policies. SchoolDocs provides us with a comprehensive core set of policies, which have been well researched and follow the Ministry of Education National Administration Guidelines. The policies and procedures are tailored to our school, and the school supplies specific information such as our charter, and procedures for behaviour management, reporting to parents, etc.

SchoolDocs updates, modifies, or creates policies in response to changes in legislation or Ministry guidelines, significant events, reviews/requests from schools, and regular reviewing from the SchoolDocs team. Our Board of Trustees has the opportunity to view changes/additions and comment on them before they are implemented. We will advise you when policies are up for review and how you can take part in the review.

We invite you to visit the site at <https://riverview.schooldocs.co.nz> (note that there's no "www."). Our username is "riverview" and password "heartwise".

The review topic this term for parents and caregivers is:

- ◆ Te Tiriti o Waitangi
- ◆ Board Responsibility
- ◆ Parent Involvement
- ◆ Communicating with Parents
- ◆ Community Conduct Expectations
- ◆ School Character / Special Character
- ◆ Documentation and Self-Review Policy
- ◆ School Planning and Reporting
- ◆ Reporting to Parents on Student Progress and Achievement



Please follow these instructions:

1. Visit the website <https://riverview.schooldocs.co.nz/1893.htm>
2. Enter the username (riverview) and password (heartwise).
3. Follow the link to the relevant policy as listed.
4. Read the policy.
5. Click the **Start your review** button at the top right-hand corner of the page.
6. Select the reviewer type.
7. Enter your name (optional).
8. Submit your ratings and comments.

If you don't have internet access, school office staff can provide you with printed copies of the policy and a review form.

PARENTS, CAREGIVERS, VISITORS
In the interests of safety and good
communication, all visitors to our
school are expected to sign in,
using the VisTab at the School Office,
upon arrival.

When dialling the school, you will be greeted with a series of options.

You will have the option to speak directly to our reception staff, but it may be more convenient for you to choose the automated option that follows. Please be assured that any messages left are checked regularly.

Personal Assistance - press 1
Record an absence or leave a message for your child - press 2
List of contacts - press 3



Back to school for parents

Thursday 8 February
at 6.30pm in the school hall.

Come and meet the staff and learn what is planned for the year ahead.



This year, there are some changes to our PR1ME Maths programme. We are moving to the Prime International New Edition (PINE) programme. This programme is aligned with the Cambridge Curriculum and also meets the expectations and, in some areas, exceeds them, of the New Zealand Curriculum Refresh. Due to the changes, your child might be on a different book from what you expected them to be on. Please trust that we have put a lot of time and effort into making sure that every child is on the correct book. For the programme to be successful, students need to progress through the books.

SCHOLASTIC
PRIME
Mathematics

It is important to remember that PR1ME is just one part of a rich Maths programme in your child's class. All students will be given the support or extension that they need - this will not simply be moving them through books faster. Students will not be completing a whole book each year. At the end of the year, their PR1ME Practice Book will be passed onto their new teacher.

We are excited to use this new programme, as we can see the benefits that it will have for all students in the class. There is a strong emphasis on understanding, problem solving, and linking Maths to real life. These are essential skills to ensure that your child sees the importance of Maths in their lives, and can also see themselves as successful mathematicians.



FREE dental care for under 18s

Kei raro iho i te tekau mā waru, kāhore he utu

TIPS TO KEEP YOU SMILING

Fluoride in toothpaste helps prevent tooth decay

Avoid eating or drinking after brushing teeth, especially at night so the Fluoride can keep working to protect and strengthen teeth.

Need a dental appointment for your child?

0800 MY TEETH (0800 698 3384)

Monday to Friday 8am to 4:30pm



0800 698 3384
(0800 MY TEETH)

Te Whatu Ora
Health New Zealand

ASSEMBLIES

School assemblies are usually held each Friday between 2:00pm and 2:45pm in the school hall, alternating between the Kerikeri, Ōkura, and Puketōtara teams (odd weeks) and the Rangitāne, Waipapa, and Wairoa teams (even weeks). These assemblies provide a sharing time to celebrate successes and achievements – academic, sporting, cultural, as well as our HEARTWISE values. They are also an opportunity for classes to share an item, and to announce what is happening in the school. All parents and supporters are very welcome to join us for this special time together.

CLASS ASSEMBLIES



Term 1

Week 2	Room 15
Week 4	Room 16
Week 6	Room 11
Week 8	Room 14
Week 10	Room 13

Week 3	Think and Be Me
Week 5	No Assembly - HFBWG
Week 7	Year 2 team
Week 9	No Assembly - Good Friday
Week 11	to be confirmed

Scholastic Book Club provides your family with an affordable and convenient way of bringing the best in children's literature into your home. Book Club orders also support our school, as 15% of your order spend goes back to our school in valuable Scholastic Rewards.

Book Club catalogues are distributed twice a term. In term 4 Riverview School holds a Book Fair in the library, but this is still to be confirmed for 2024.

The deadline to get paperwork back to the school office for this catalogue that was distributed yesterday is **Wednesday 14 February**.

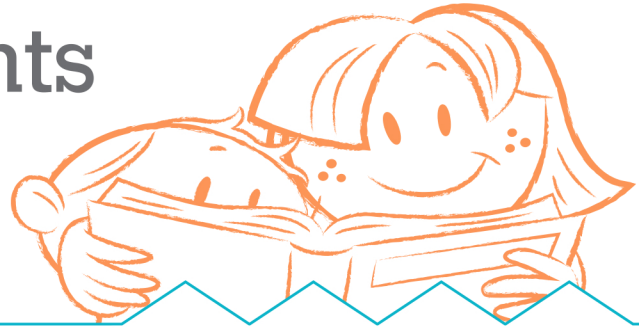


Introducing

 SCHOLASTIC

Book Clubs **LOOP** for Parents

AVAILABLE
AS AN APP!



LOOP is Scholastic Book Clubs **L**inked **O**nline
Ordering & **P**ayment platform for Parents.

If you want to pay by credit card for your online Book Club order, **LOOP** makes it easy! It eliminates the need for paper order forms plus your online order is submitted to the school safe and sound.

Log-in to mybookclub.scholastic.co.nz or download our iPhone and iPad app from the App Store or get it on Google Play for Android.

- For a quick start, just click on **ORDER** in the top menu or **REGISTER** first to save your details for next time
- Select your school and your child's class
- Add your child's first name and last initial (so the school knows who the book is for)
- Enter the item number from the Book Club catalogue
- You can order for multiple children at once if they attend the same school
- All orders are linked directly to the school for submission to Scholastic. Books will still be delivered to your child's classroom if you order by the close date
- There's no need to return paper order forms or payment receipt details to your school!



Kerikeri Chess Club

Procter Library Kerikeri



Come and enjoy a game of chess
All skill levels and ages - no registrations or fees
(we will be playing upstairs or in the community room)

11am-1pm Upstairs

- Saturday 03 Feb
- Saturday 02 Mar
- Saturday 27 Apr
- Saturday 25 May
- Saturday 22 June
- Saturday 20 Jul
- Saturday 17 Aug
- Saturday 14 Sep
- Saturday 12 Oct
- Saturday 09 Nov
- Saturday 07 Dec

1pm-3pm Community Room

- Saturday 17 Feb
- Saturday 16 Mar
- Saturday 13 Apr
- Saturday 11 May
- Saturday 08 Jun
- Saturday 06 July
- Saturday 03 Aug
- Saturday 31 Aug
- Saturday 28 Sep
- Saturday 26 Oct
- Saturday 23 Nov



Kerikerichessclub@gmail.com

Lasse 027 2728478

<https://sites.google.com/view/kerikerichessclub/>

